

# RED • CAR

WEST SONOMA COAST

## 2010 SONOMA COAST

SYRAH

### ➤ APPELLATION AND VINTAGE

One of the original Rhône Rangers, Red Car has been producing Syrah longer than any other varietal. Today, it is at the forefront of the style evolution in California Syrah. Restraint, naturally high acidity, true Northern Rhône Syrah perfume, and silky tannins are important components in Red Car's 2010 Sonoma Coast Syrah along with native yeast fermentation, moderate stem inclusion and being aged in 500L puncheons for 12 months.

Sourced from three of the stand-out Syrah vineyards in Northern California, the Red Car Estate Vineyard in the Fort Ross - Seaview AVA, the Martinelli Family's Zio Tony Vineyard and the Vivio Vineyard (Joe Vivio's eponymous site in Bennett Valley), this wine showcases Red Car's commitment to balance.

### ➤ TASTE

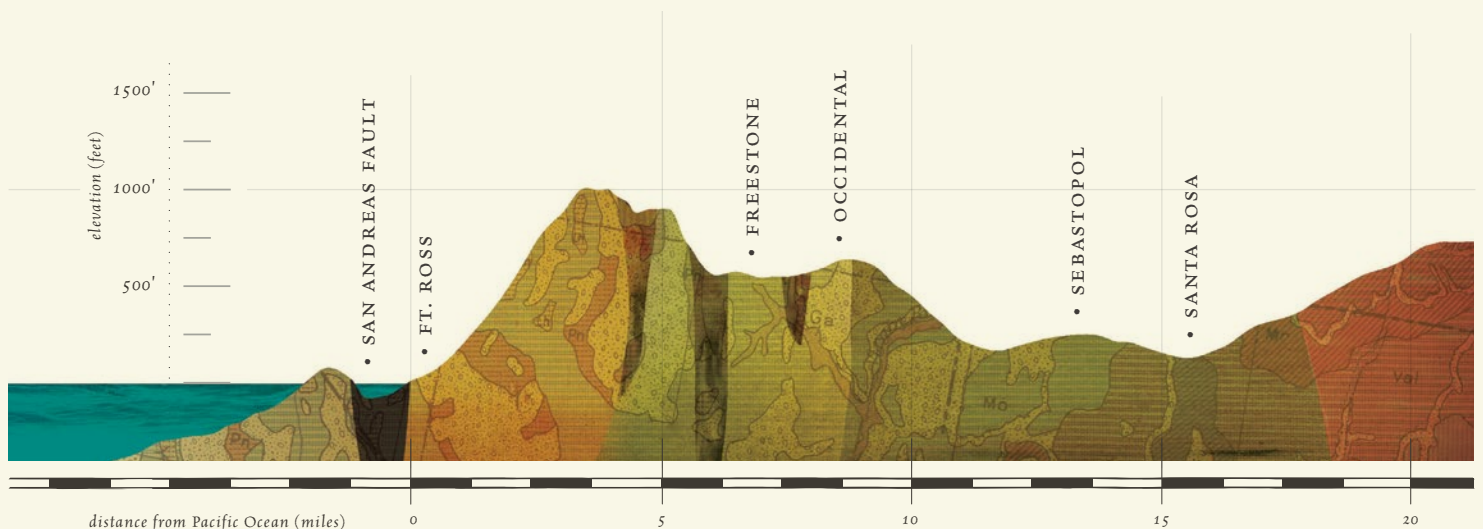
Blackberry, sandalwood, white pepper

### ➤ PHILOSOPHY

Red Car is focused on growing Pinot Noir, Chardonnay and Syrah in a network of cold-climate vineyards on the edge of the Pacific in the West Sonoma Coast. We are hands-on farmers, part of a small cadre of wineries in our region who are fortunate to grow a large majority of our own fruit. For several years now we have worked hard to go beyond sustainability and have integrated the concepts and principles of organic, biodynamic and permaculture systems into our farming as we search for nature's ideal pathways. Our wines are made in small lots utilizing minimalist intervention techniques like native yeast fermentation, gravity flow, and natural acid.

### ➤ SPECS

ALCOHOL	13.7%
AVA	Sonoma Coast
PRODUCTION	52 Barrels
TOTAL ACIDITY	5.60 g/L
STEMS	10%
FRENCH OAK	17% New, 83% Neutral
pH LEVEL	3.66
BARREL AGING	12 Months
VINEYARDS	Zio Tony Red Car Estate Vivio



VINEYARDS on the EDGE OF THE PACIFIC

REDCARWINE.COM