

RED • CAR

WEST SONOMA COAST

2013 VIVIO VINEYARD

ROUSSANNE

► ELEV. 730 FT. / PACIFIC OCEAN 19 MI.

BENNETT VALLEY

► VIVIO VINEYARD

Single-varietal Roussanne is extraordinarily rare in California and cool-climate versions are rarer still. This varietal is very slow to ripen and notoriously difficult to grow, but as we're sure you've noticed, we love challenges. The Vivio Vineyard lies in the path of the cool coastal fog as it enters Bennett Valley from the Petaluma wind gap. There are some days when this site is under a heavy layer of fog longer than our most coastal vineyards. This is usually the last fruit we pick every year. Red Car is proud to be one of a handful of wineries tackling this challenging grape. We do it for love and passion. This is a California original not to be missed.

► TASTE

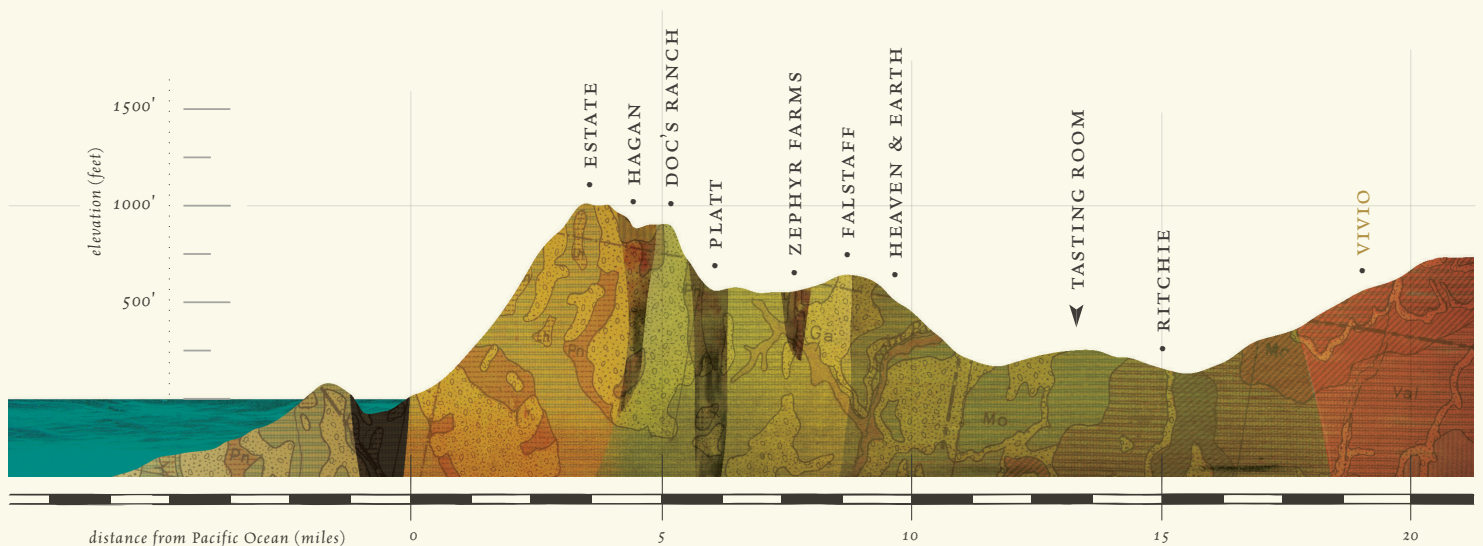
Honeycomb, white flowers, Asian pear

► PHILOSOPHY

Red Car is focused on growing Pinot Noir, Chardonnay and Syrah in a network of cold-climate vineyards on the edge of the Pacific in the West Sonoma Coast. We are hands-on farmers, part of a small cadre of wineries in our region who are fortunate to grow a large majority of our own fruit. For several years now we have worked hard to go beyond sustainability and have integrated the concepts and principles of organic, biodynamic and permaculture systems into our farming as we search for nature's ideal pathways. Our wines are made in small lots utilizing minimalist intervention techniques like native yeast fermentation, gravity flow, and natural acid.

► SPECS

VINEYARD	<i>Vivio</i>
AVA	<i>Bennett Valley</i>
PRODUCTION	<i>200 Cases</i>
AVERAGE BRIX	<i>22.3°</i>
TOTAL ACIDITY	<i>4.9g/L</i>
FRENCH OAK	<i>100% Neutral</i>
pH LEVEL	<i>3.70</i>
CLONES	<i>468</i>
SOIL TYPE	<i>Sonoma Volcanics</i>
BARREL AGING	<i>10 Months</i>



VINEYARDS on the EDGE OF THE PACIFIC

REDCARWINE.COM