

# RED • CAR

WEST SONOMA COAST

## 2014 RITCHIE VINEYARD

CHARDONNAY

➤ ELEV. 130 FT. / PACIFIC OCEAN 15 MI.

SONOMA COAST

### ➤ RITCHIE VINEYARD

Few new world Chardonnay sites rival the prestige of the famed Ritchie Vineyard. These true old Wente clone vines are among the oldest Chardonnay growing in all of Sonoma County and after four years of working with this magnificent site, we now fully understand how to bring the Red Car voice to these celebrated old vines. In 2014, we continued to harness the potential of the vineyard by creating a Chardonnay with perfume, texture, minerality, and nuance. The mouthfeel and body of this wine is opulent yet racy and has received high accolades throughout the years from wine critics and Red Car fans alike. This wine can certainly be enjoyed at a young bottle age but the rewards for cellaring the 2014 Ritchie Vineyard Chardonnay will be significant.

### ➤ TASTE

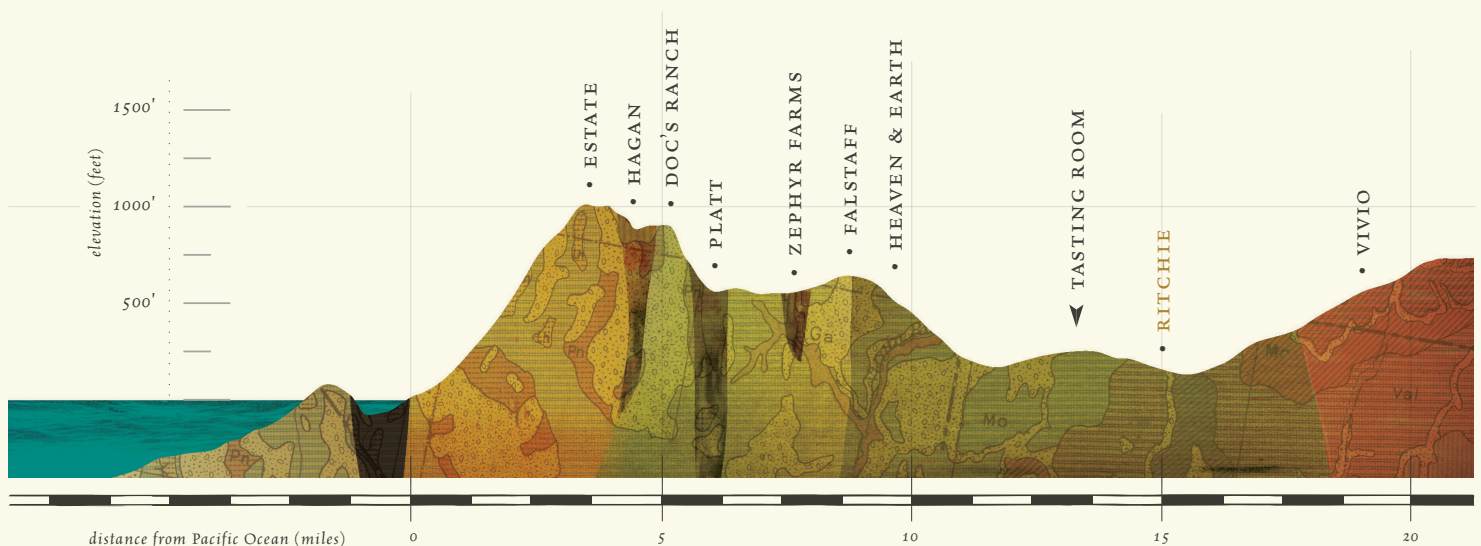
5 OHFSOFFTU TFFUTDFT **MD**

### ➤ PHILOSOPHY

Red Car is focused on growing Pinot Noir, Chardonnay and Syrah in a network of cold-climate vineyards on the edge of the Pacific in the West Sonoma Coast. We are hands-on farmers, part of a small cadre of wineries in our region who are fortunate to grow a large majority of our own fruit. For several years now we have worked hard to go beyond sustainability and have integrated the concepts and principles of organic, biodynamic and permaculture systems into our farming as we search for nature's ideal pathways. Our wines are made in small lots utilizing minimalist intervention techniques like native yeast fermentation, gravity flow, and natural acid.

### ➤ SPECS

VINEYARD	<i>Ritchie</i>
AVA	<i>Sonoma Coast</i>
PRODUCTION	<i>500 Cases</i>
AVERAGE BRIX	<i>19.8°</i>
TOTAL ACIDITY	<i>7.0 g/L</i>
FRENCH OAK	<i>10% New, 90% Neutral</i>
pH LEVEL	<i>3.3</i>
CLONES	<i>Old Wente</i>
SOIL TYPE	<i>Goldridge</i>
BARREL AGING	<i>15 Months</i>



VINEYARDS on the EDGE OF THE PACIFIC

REDCARWINE.COM