

# RED • CAR

WEST SONOMA COAST

## 2013 VIVIO VINEYARD

SYRAH

► ELEV. 730 FT. / PACIFIC OCEAN 19 MI.

BENNETT VALLEY

### ► VIVIO VINEYARD

Vivio is our only vineyard growing in red volcanic soil, lending a distinct mineral edge to the Rhône varietals planted there. It lies in the path of the cool coastal fog as it enters Bennett Valley from the Petaluma wind gap. The 2013 Vivio Vineyard Syrah fiercely exhibits this tension between warm soil and cold climate showing herbs and spice components over fruit. This is a Syrah with finesse and balance that is built to age.

### ► TASTE

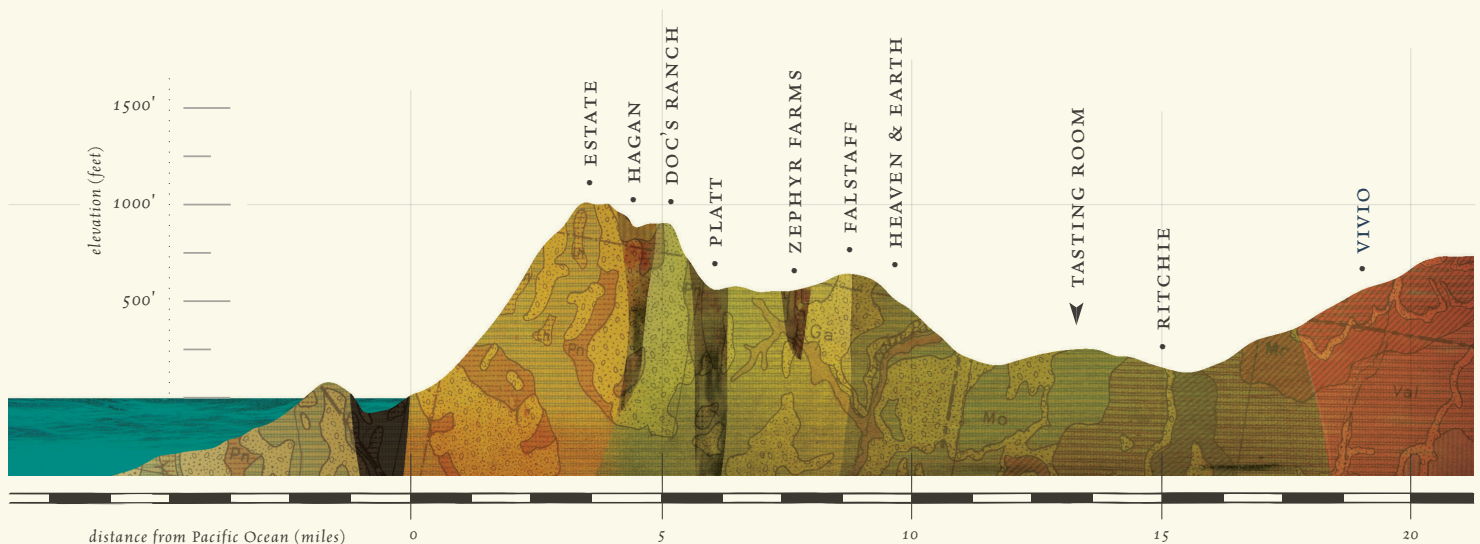
Anise, Violets, White Pepper, Iron

### ► PHILOSOPHY

Red Car produces site-specific wines, focused on achieving bright acidity and lively aromatics. Sustainability is at the core of why we exist. We operate each part of the business from the belief that less is more. We are stewards of the land and of the people who consume our wine to ensure harmony with the Earth. We farm organically to protect the soil and our consumers from artificial chemical intervention. At each harvest, this philosophy makes its way into the cellar where we allow our wines to purely express each vineyard's unique character. We achieve this by using native yeast fermentation and minimal intervention practices.

### ► SPECS

VINEYARD	<i>Vivio</i>
AVA	<i>Bennett Valley</i>
PRODUCTION	<i>200 Cases</i>
AVERAGE BRIX	<i>22.3°</i>
TOTAL ACIDITY	<i>5.35g/L</i>
STEMS	<i>20%</i>
FRENCH OAK	<i>100% Neutral</i>
pH LEVEL	<i>3.8</i>
CLONES	<i>Alban, Aussie</i>
SOIL TYPE	<i>Sonoma Volcanics</i>
BARREL AGING	<i>18 Months</i>



VINEYARDS on the EDGE OF THE PACIFIC

REDCARWINE.COM