

# RED • CAR

WEST SONOMA COAST

## 2015 HEAVEN & EARTH

PINOT NOIR

➤ ELEV. 500 FT. / PACIFIC OCEAN 8 MI.

SONOMA COAST

### ➤ HEAVEN & EARTH VINEYARD

Red Car has been crafting Heaven & Earth longer than any other Pinot Noir bottling. Since the inaugural 2007 vintage, it has developed quite a following among our loyal members and is typically the first of our Pinot Noirs to completely sell out. The wine comes from the small 4.5 acre Heaven & Earth site on the Coletti Ranch, in the heart of the Occidental region, planted to our exact specifications in 2004 using the Calera, Pommard and 828 clones. The 2015 vintage will prove to be another favorite for fans of Heaven and Earth. The blocks of Calera - characteristically a riper, smaller berry - form the backbone of this luscious Pinot Noir. This heritage clone is highly concentrated and helps define the site-specific expression of this velvety, sumptuous wine. It epitomizes the concept of "cool sunshine" and consistently offers a perfect balance between power and acidity.

### ➤ TASTE

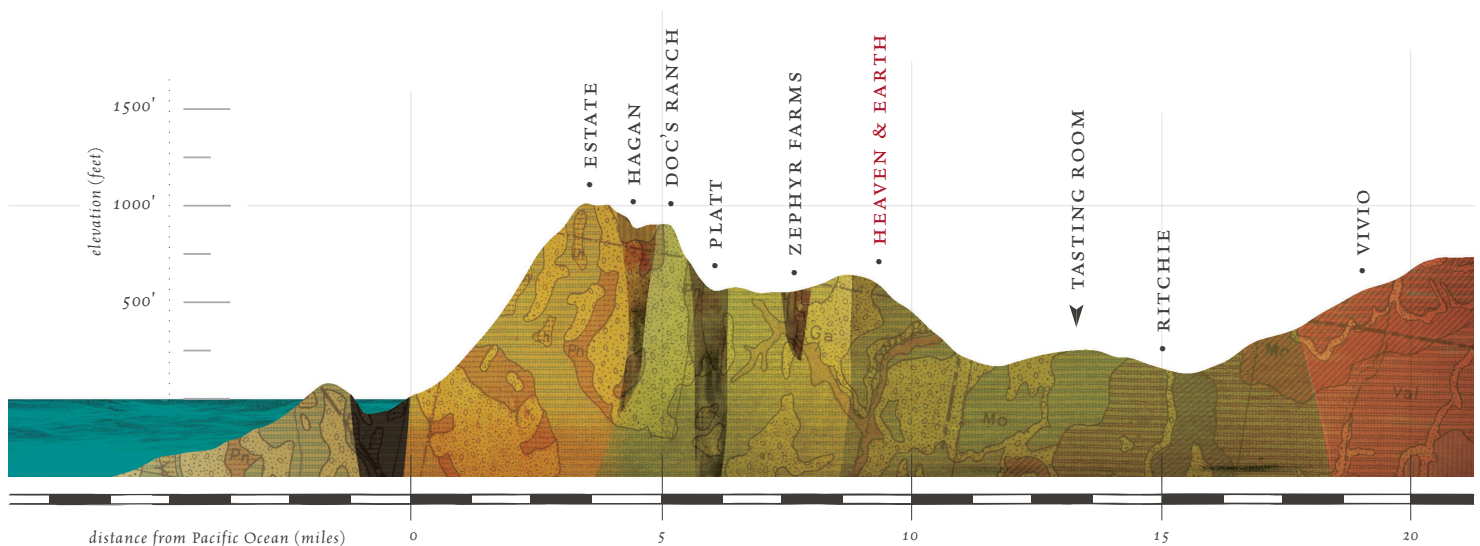
Black cherry, brown spices, roses, bay laurel

### ➤ PHILOSOPHY

Red Car produces site-specific wines, focused on achieving bright acidity and lively aromatics. Sustainability is at the core of why we exist. We operate each part of the business from the belief that less is more. We are stewards of the land and of the people who consume our wine to ensure harmony with the Earth. We farm organically to protect the soil and our consumers from artificial chemical intervention. At each harvest, this philosophy makes its way into the cellar where we allow our wines to purely express each vineyard's unique character. We achieve this by using native yeast fermentation and minimal intervention practices.

### ➤ SPECS

VINEYARD	<i>Heaven &amp; Earth</i>
AVA	<i>Sonoma Coast</i>
PRODUCTION	370 Cases
AVERAGE BRIX	22.5°
TOTAL ACIDITY	5.9 g/L
STEMS	15%
FRENCH OAK	16% New, 84% Neutral
pH LEVEL	3.52
CLONES	<i>Calera, 828, Pommard</i>
SOIL TYPE	<i>Yorkville Loam</i>
BARREL AGING	18 Months



VINEYARDS on the EDGE OF THE PACIFIC

REDCARWINE.COM